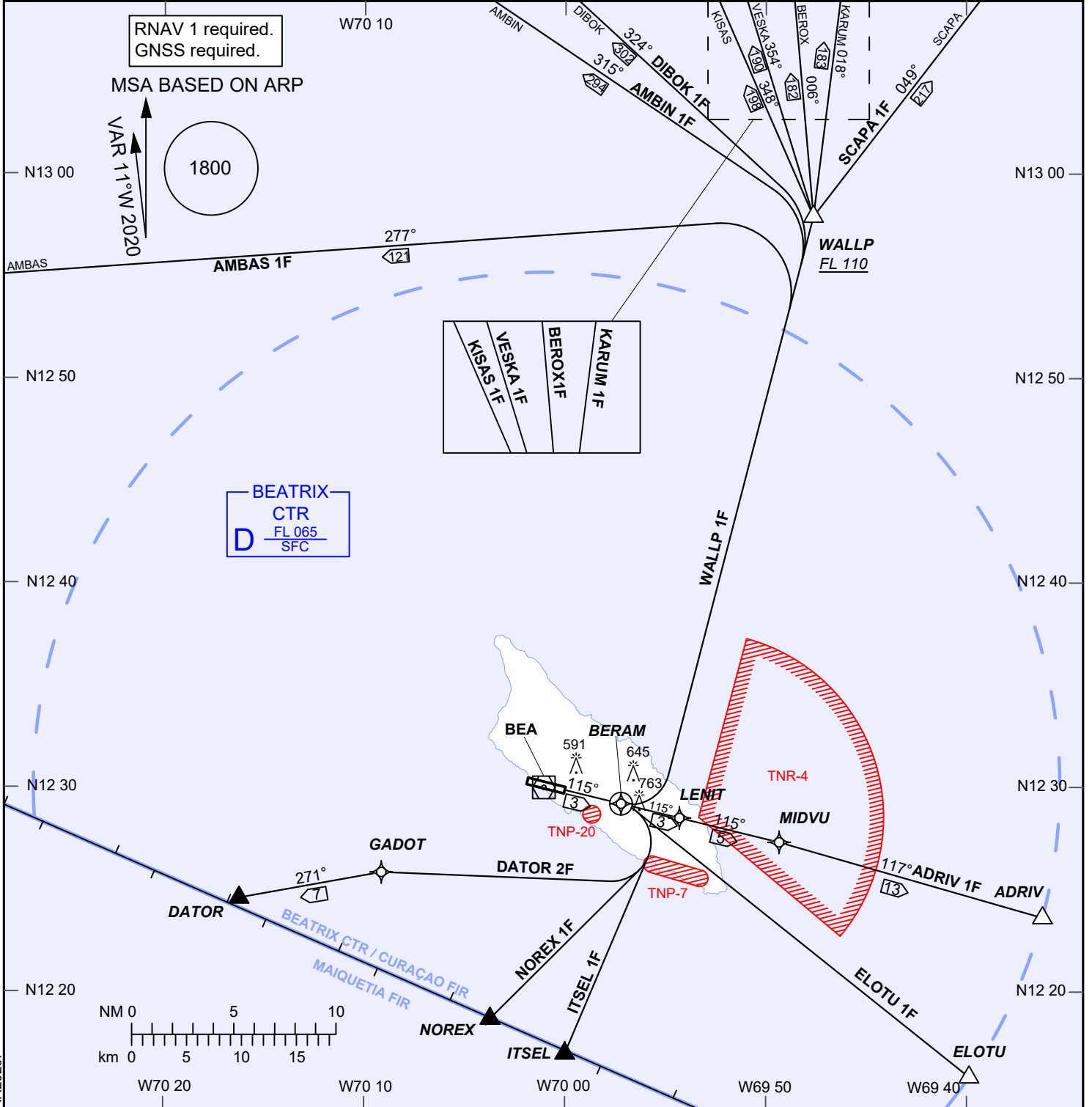


AIP DUTCH CARIBBEAN

STANDARD DEPARTURE CHART INSTRUMENT (RNAV) - ICAO	AD ELEVATION: 62	BEATRIX:		RWY 11
	TRANS LEVEL: FL 040	TWR 118.0	APP 120.9	REINA BEATRIX INT'L
	TRANS ALT: 2500 (2438)	APRON 121.6	ATIS 132.1	(TNCA), ARUBA



1. BEA VOR 113.8 MHz. Declination 11°W.
 2. All SIDs require minimum 255 ft/NM until 1100 ft AMSL.
 3. WALLP 1F: After passing WALLP, expect ATC instructions to first en-route waypoint.
 4. Advise ATC if unable to climb above TNR-4 ceiling prior to crossing boundary.
 5. Altitudes, elevations and heights in feet, distances in nautical miles, bearings are magnetic.
- | | | |
|-----------------------------|----------|--------------|
| ICAO SID DESIGNATORS | TNP-7 | GND - 2500 |
| ADRIV 1F | ITSEL 1F | TNR-4 |
| AMBAS 1F | KARUM 1F | TNP-20 |
| AMBIN 1F | KISAS 1F | SFC-by NOTAM |
| BEROX 1F | NOREX 1F | GND - 2500 |
| DATOR 2F | SCAPA 1F | |
| DIBOK 1F | VESKA 1F | |
| ELOTU 1F | WALLP 1F | |

CHANGES: Editorial. MAGVAR2020.